

## Ash Grove, BR4 £2,700 PCM



This stunning 5 bedroom semi detached house is located a short walk from West Wickham High Street and located in quiet cut-de-sac.

Offering just under 2500 sq ft of living space the house is beautifully decorated throughout and finished to a high standard.

The house has a good size living room to the front of the property and a stunning open plan kitchen diner to the rear as well as a conservatory that is the hub of the house. There is also a downstairs WC and a utility room.

The rear garden has a lovely patio area for entertaining as well as a large lawned area.

Upstairs to the first floor and there are 3 double bedrooms (one with an en-suite) and a good size single as well as large family bathroom with separate shower cubicle.

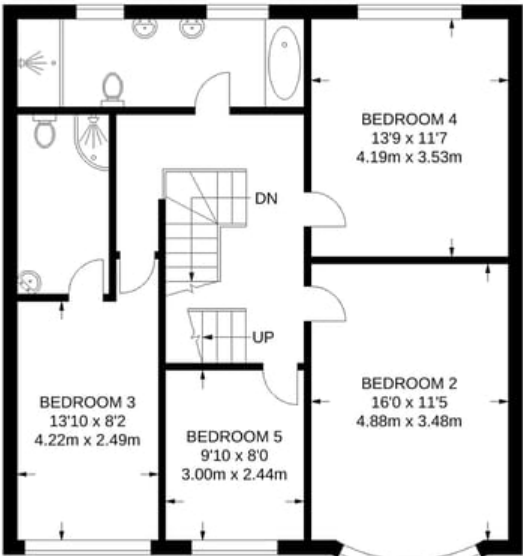
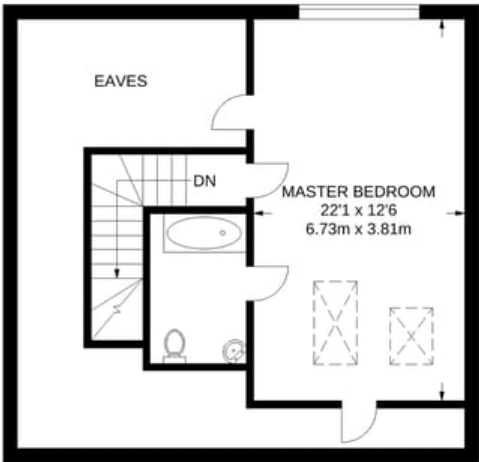
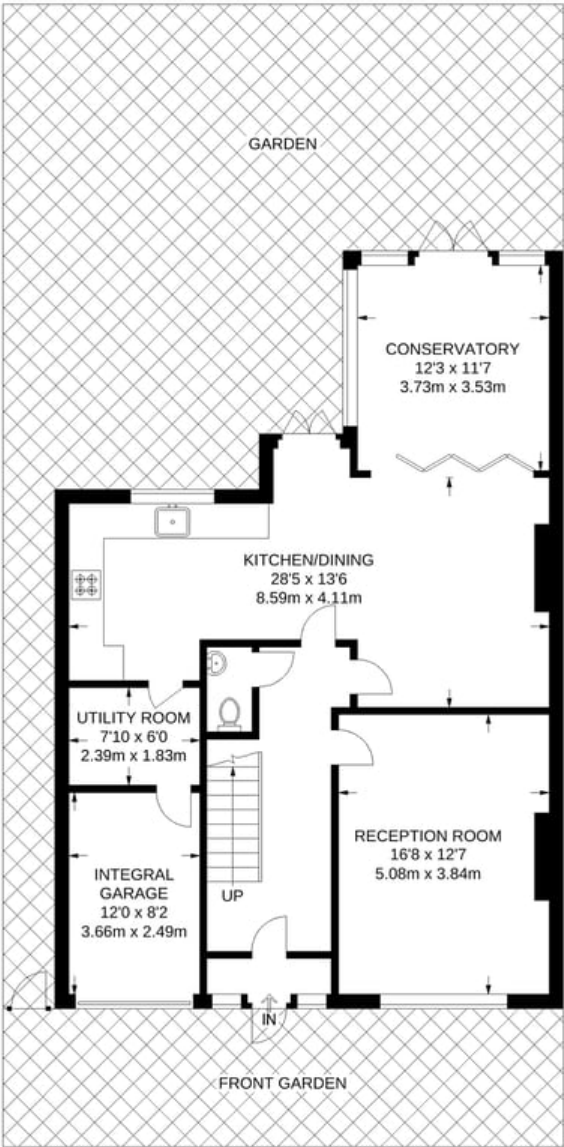
Upstairs again to the converted loft and there is a master bedroom also with an ensuite bathroom.

The house is well located for Schools such as Hawes Down primary and Hayes and Langley Park Schools are also within easy reach. West Wickham Train station is also less than 10 mins walk. Available to rent from 1st August 2021.

“ Please note we are only arranging essential viewings at the moment for people who are either under offer or chain free due to the high Covid levels and instructions from the Government”







APPROXIMATE GROSS INTERNAL AREA  
2462 SQ FT / 228.7 SQ M