

Hartland Way, Shirley, CR0 £795,000



This stunning 3 bedroom detached house really does have the wow factor!

Located in Shirley and offering almost 1800 Sq ft of living space this house optimises contemporary open plan living.

The finish of the house is of the highest standard throughout and upon entry you are welcomed into an amazing open plan living area with glass doors leading out to a beautiful garden.

There is also a separate living room to the front of the property as well as an office. There is also a utility room and a separate WC.

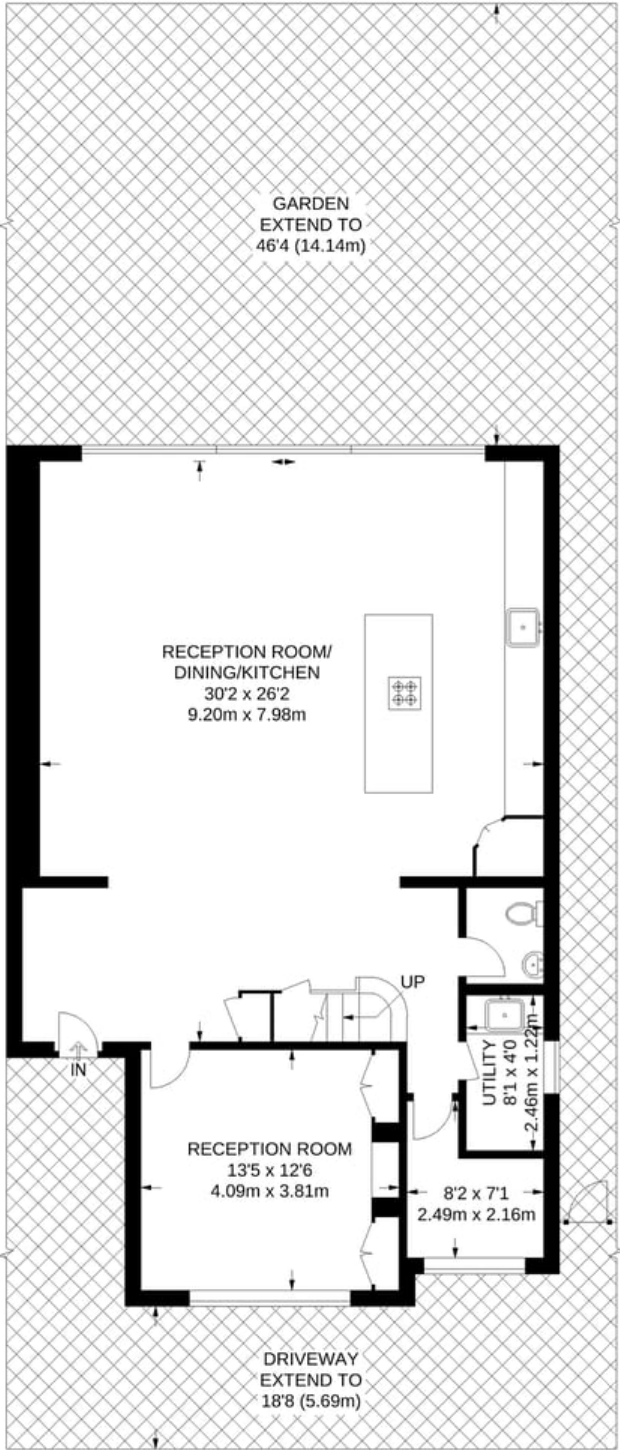
Upstairs you'll find 3 double bedrooms and a large modern family bathroom.

The house also has potential to extend upstairs to the side and the rear and above but is also stunning as it is.

Available chain free.

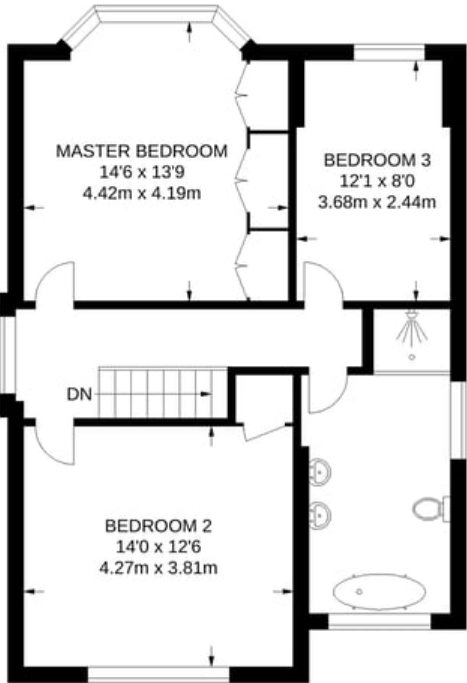
"Please note we are only arranging essential viewings at the moment for people who are either under offer or chain free due to current instructions from the government."





GROUND FLOOR
1075 SQ FT / 99.9 SQ M

APPROXIMATE GROSS INTERNAL AREA
1768 SQ FT / 164.3 SQ M



FIRST FLOOR
693 SQ FT / 64.4 SQ M