

## Tremaine Road, SE20 £1,950 PCM



Located in a quiet tree lined road close to both Elmers End and Birkbeck train stations is this lovely 3 bedroom terraced house.

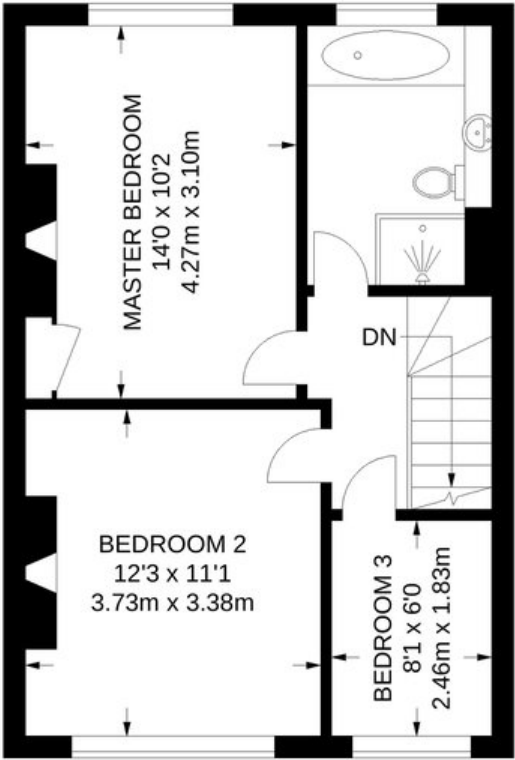
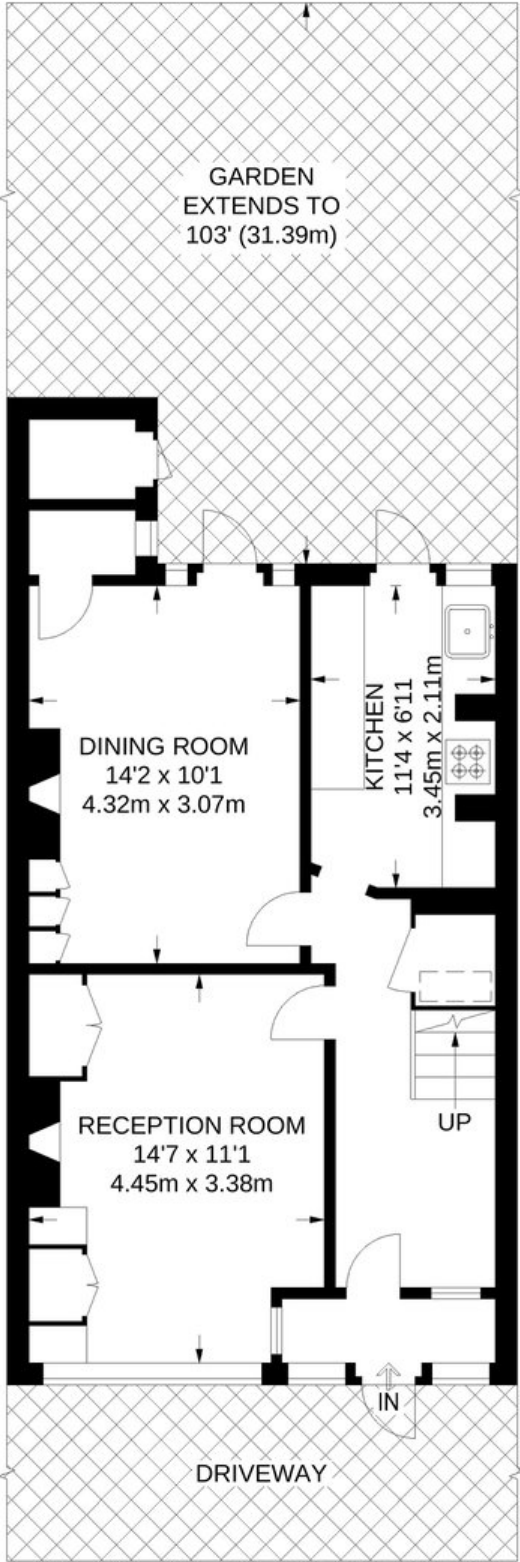
Offering over 1000 Sq ft of living space, the house which is wider than some of the other houses of its type has a good size living room to the front of the property and a dining room to the rear.

There is also a separate kitchen at the back that leads out to a large well kept garden that is over 100ft long.

Upstairs there are 2 good size double bedrooms as well as a single bedroom and a modern family bathroom with separate shower cubicle.

Unfurnished and available immediately.





**APPROXIMATE GROSS INTERNAL AREA**  
1002 SQ FT / 93.1 SQ M