

## Pope Road, BR2 £2,500 PCM



This beautiful, 3 bedroom semi-detached victorian house is finished to a really high standard and has been extended to create more space. Offering 1280 sq ft of living space the property has a good size living room to the front of the house. To the rear is a stunning open plan kitchen diner that leads out to the rear garden and also has a shower room with WC just off it.

Upstairs to the first floor and you'll find the master bedroom to the rear that has a walk in wardrobe and ensuite bathroom, to the front of the house is the second bedroom that is also a double.

Upstairs to the converted loft and you'll find the third bedroom and another bathroom.

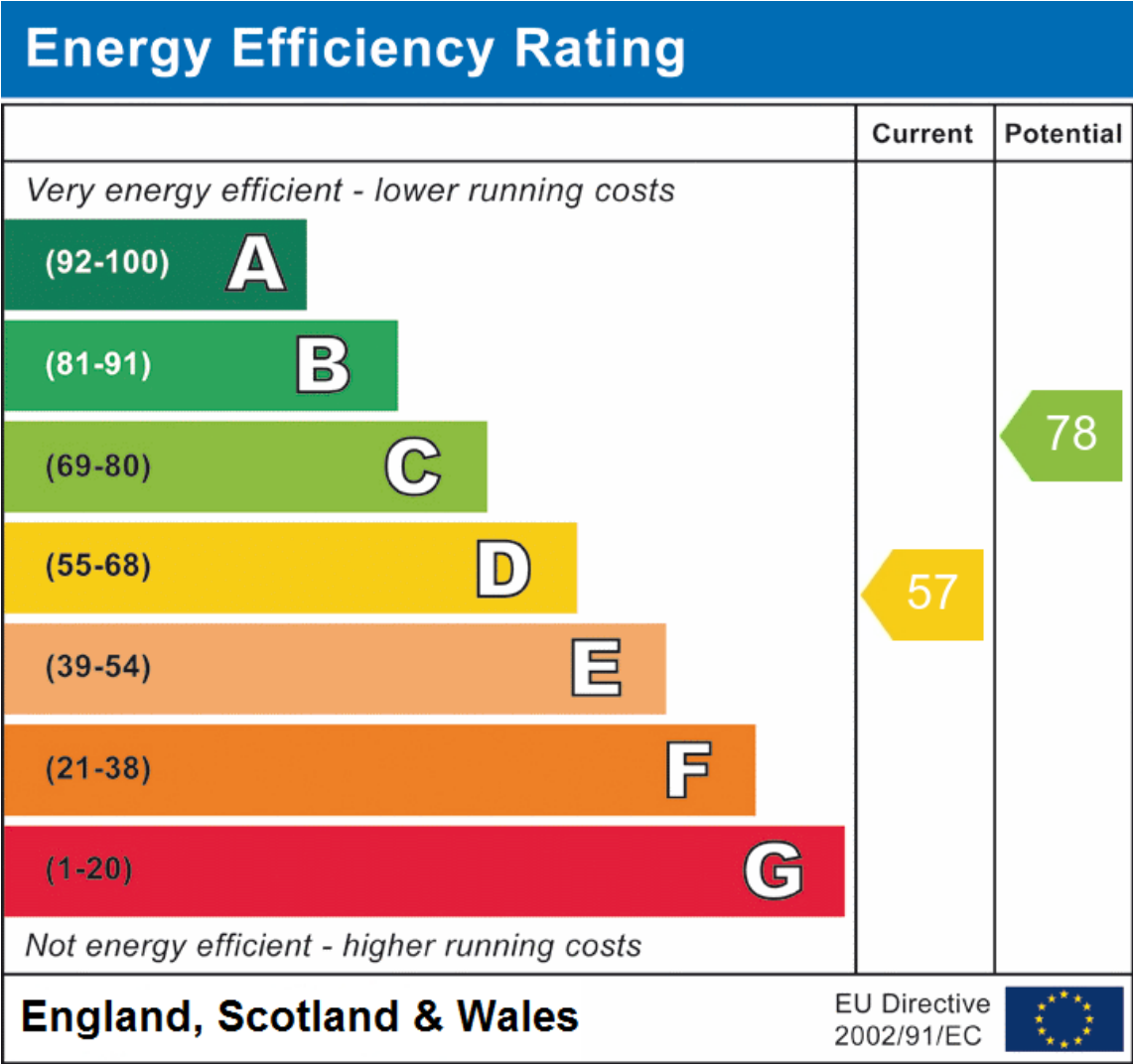
The house has amazing amounts of natural light running through it and is really a house that you would be proud to call home.

Available unfurnished from 14 July 2023.

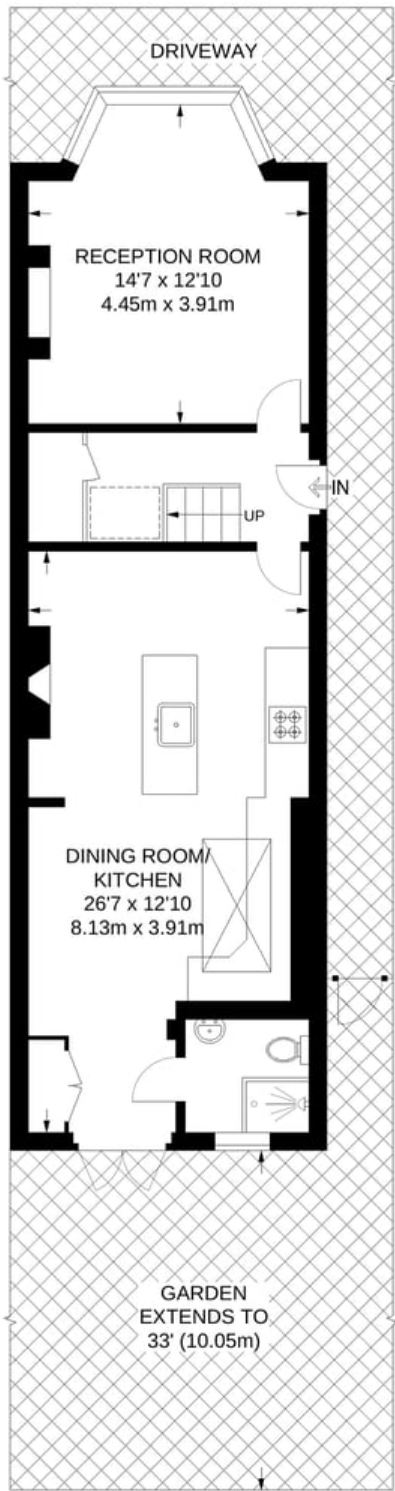
Sorry, no pets allowed.

Call us to arrange to see this beautiful house.





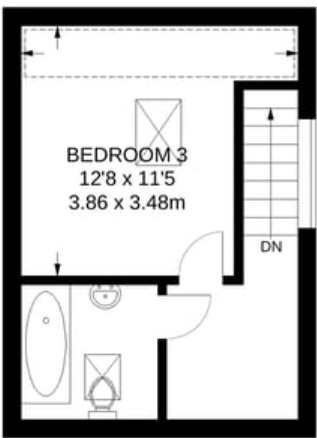




**GROUND FLOOR**  
585 SQ FT / 54.3 SQ M



**FIRST FLOOR**  
467 SQ FT / 43.3 SQ M



**SECOND FLOOR**  
228 SQ FT / 21.3 SQ M

**APPROXIMATE GROSS INTERNAL AREA**  
1280 SQ FT / 118.9 SQ M