

## Lime Tree Walk, BR4 £850,000



This stunning newly refurbished and extended 4 bedroom semi detached house offers 1725 Sq ft of living space and is located close to Wickham Common primary and Hayes secondary schools.

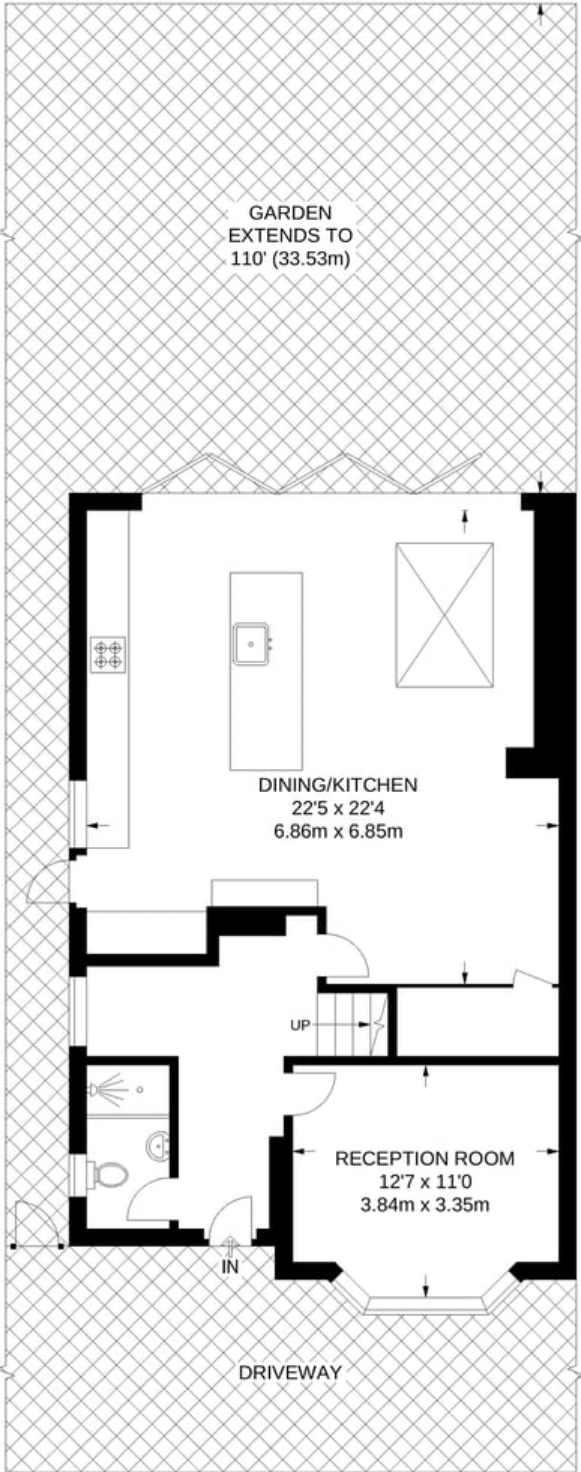
The house is finished to very high standard throughout and has a living room to the front as well as a downstairs shower room with WC.

To the rear is a stunning open plan kitchen/diner with bi fold doors leading out to a decked area and then onto a a lawned garden that extends to 110 ft.

Upstairs to the first floor and there are 3 bedrooms and a large family bathroom and then up again to the loft conversion for the master bedroom with en-suite shower room.

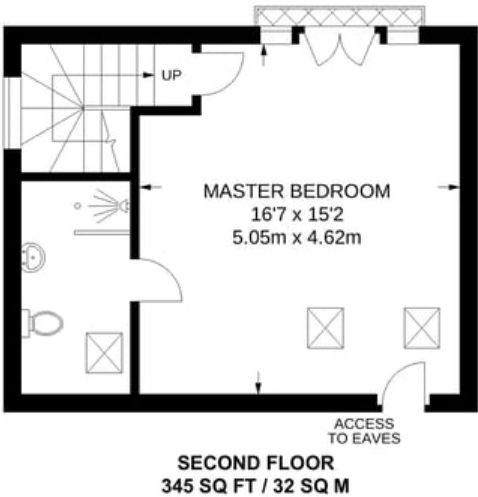
All in all this is a stunning home so be sure to get in and see it quickly. Open day Sunday 12th June 2022 - contact us to confirm a time.



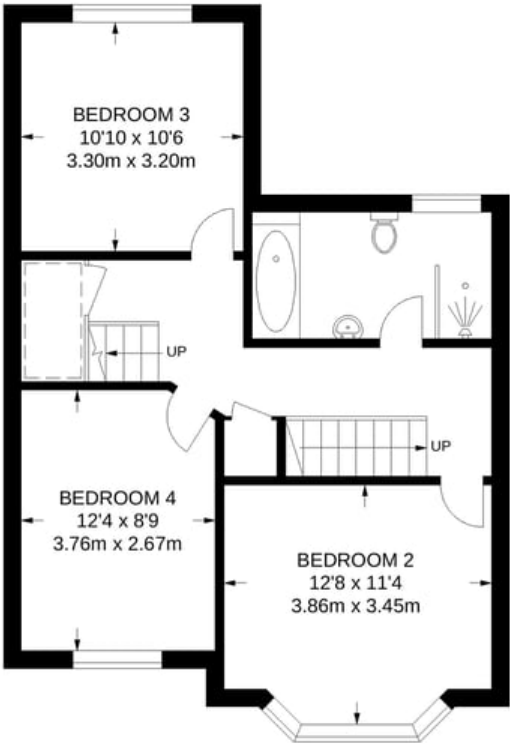


**GROUND FLOOR**  
790 SQ FT / 73.4 SQ M

**APPROXIMATE GROSS INTERNAL AREA**  
1725 SQ FT / 160.2 SQ M



**SECOND FLOOR**  
345 SQ FT / 32 SQ M



**FIRST FLOOR**  
590 SQ FT / 54.8 SQ M